

Exceptional Item Request Form - FY 2024-2025

Request # AF-4

Date: 7/8/2024

Requestor: Ismael Parra, Public Works Director

Allocating Additional Funds To:	
Fund Name & No.	100 - General Fund & 800 - Wastewater
Department Name & No.	Streets (100-30) & Wastewater (800-60)
Line Item No. & Description or NEW Line Item Description	5171 - Equipment

Item Description:

CCTV Mainline Crawler for Wastewater Mains/Storm Sewer

50% Wastewater (800-60) - \$37,500
50% Streets (100-30) - \$37,500
 Total - \$75,000

Description of Benefit from Purchase (Improved Service, Lower Cost, etc.)

Investing in a CCTV system for inspecting wastewater mains and storm sewers offers several key benefits:

Accurate Inspections: High-resolution video footage allows for precise identification of issues such as blockages, cracks, and leaks, ensuring accurate diagnostics and effective repairs.

Cost Savings: Early detection of potential problems enables timely maintenance, reducing the likelihood of costly emergency repairs and extending the infrastructure's lifespan.

Enhanced Safety: Remote inspections eliminate the need for personnel to enter hazardous environments, improving worker safety and reducing accident risks.

Number of Items or Units: 1

Cost Per Item or Unit: \$ 75,000

Future years -
estimated for
software
updates,
wheels,
hardware etc.

Additional Cost (Including ongoing maintenance): \$ 5,000

Total Cost: \$ **80,000**

When Balance Offset Is Needed

Offset Savings From Fund/Dept./Line Item No.: _____	saved amount: _____
Offset Savings From Fund/Dept./Line Item No.: _____	saved amount: _____
Offset Savings From Fund/Dept./Line Item No.: _____	saved amount: _____
Offset Savings From Fund/Dept./Line Item No.: _____	saved amount: _____
Offset Savings From Fund/Dept./Line Item No.: _____	saved amount: _____
Total Amount Saved: \$ <u>-</u>	

Please attach any quotes or backup to support this Exceptional Item Request.

RIEZLER CRAWLER CAMERA

COMPACT & PORTABLE MAINLINE CRAWLER

QUOTE

QTY	DESCRIPTION	PART #	PRICE
			SUBTOTAL
			SALES TAX
			SHIPPING
			TOTAL

Date:
 Quotation Prepared By:
 Additional Info:

PO#:
 This is a quotation on the goods named, subject to the conditions noted below:

Need Equipment Financing?
 Visit www.insightvisioncameras.com/financing/ or
 call 800-488-8177 for more information

Make orders payable to Alliance Technology, LLC. 600 Dekora Woods Blvd., Saukville, WI 53080. Wire transfer, check, Visa, Master Card, Amex (+2%) accepted. Payment in full is required prior to shipment. F.O.B. Saukville, WI. All prices quoted in U.S. dollars and valid for 30 days and do not include duties and applicable taxes. One (1) Year Limited Warranty.

RIEZLER SEWER INSPECTION SYSTEM

- Reporting Made Easy From 4" to 80"
- Customizable To Your Needs
- Rugged
- Modular
- Easy-To-Use



Distance	Observation	Counter	Image
0 Ft	Start	00:00:04	
33.83 Ft	Tree Root Ball Lateral 1	00:06:31	
93.34 Ft	Tree Root Ball Lateral 2	00:12:36	
245.41 Ft	Lateral 6 Tree Root	00:33:22	
331.50 Ft	Lateral 9	00:46:12	
386.55 Ft	End of Inspection	01:07:44	

RIEZLER CRAWLER CAMERA SYSTEM OVERVIEW

FWL-100 Accessories

-  Lifhook With Holder
-  Lift Fork
-  Camera Elevator
-  D84
-  D96
-  D97
-  D100
-  D117
-  D122
-  Wheel Transport Case

Control Unit



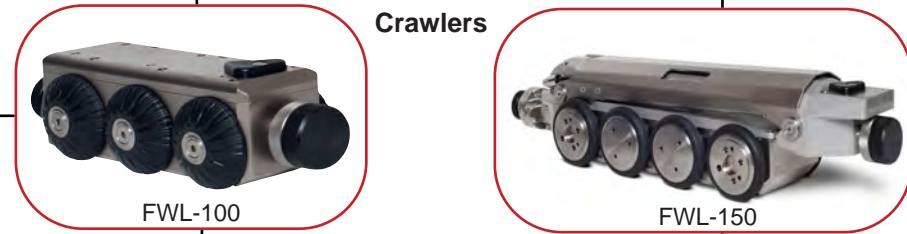
Reels



FWL-150 Accessories

-  D160
-  D215
-  D15 Wheel Transmission
-  Elevator Extension
-  Lift Hook

Crawlers



Camera Heads



Accessories



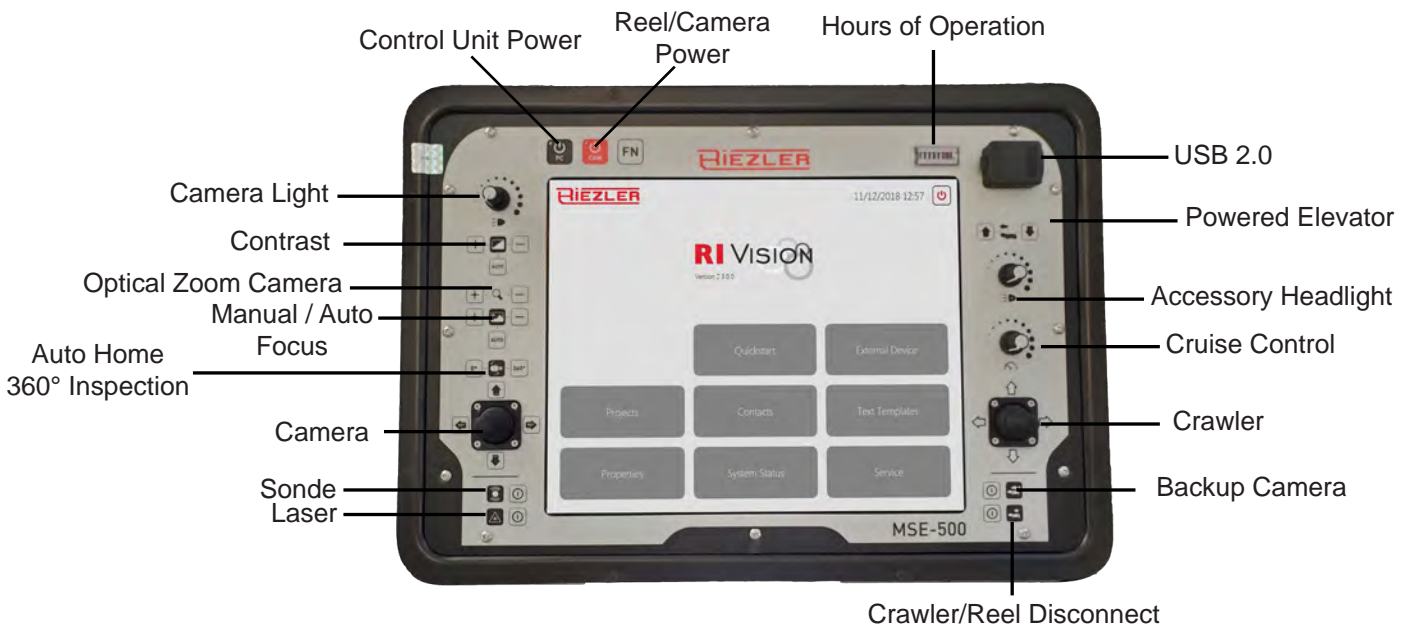
RIEZLER CRAWLER CAMERA CONTROL UNIT

MSE-500 CONTROL UNIT

- High resolution daylight visible 12.4" (1024x768p) touchscreen display
- USB ports for optional keyboard / mouse for added control
- Videos and pictures saved on internal memory with option to export to USB device
- Industrial grade PC with 256 GB SSD harddrive (faster boot-up and loading times)
- Free software updates
- 2 x USB 2.0, 1 x RJ45, 1 x Video IN, 1 x Video OUT, 1 x HDMI
- 110-240 V AC power / max. 250 Watts

CONTROL UNIT SPECIFICATIONS

Dimensions	19.3" L x 15" W x 11.4" H
Weight	22.1 lbs.



RIEZLER CRAWLER CAMERA SOFTWARE



- Free software updates
- Continuous development of new features
- Integrated digital meter counter including sensor values
- Text database to create damage catalogues
- Multilingual user interface and reports
- Customizable interface (logos, business information, movable data fields)
- Modules to allow for measurement, inclination graphics, reports, and data transfer to 3rd party systems (ex. WinCan)

In-pipe Readout

Record, Pause, Stop, Picture, Laser, and Comment

Full Screen View

Custom Colored Overlays

Custom Logo

Distance Counter (Editable)

Camera Tilt/Pan PSI Status

Crawler Angle/Pitch PSI Status

Digital Zoom

Digital Pan

Camera and Crawler Status

- Pressure
- Camera Pan and Tilt Degrees
- Crawler Inclination Percent

Current Project List

Pictures / Comments

Distance Counter

System Memory Available

Video Quality

Date and Time Stamps

Distance	Depth	Time	Video	Photo
0.00 m	0.00 m	00:00:00		
0.50 m	0.50 m	00:00:05		
1.00 m	1.00 m	00:00:10		
1.50 m	1.50 m	00:00:15		
2.00 m	2.00 m	00:00:20		
2.50 m	2.50 m	00:00:25		
3.00 m	3.00 m	00:00:30		
3.50 m	3.50 m	00:00:35		
4.00 m	4.00 m	00:00:40		
4.50 m	4.50 m	00:00:45		
5.00 m	5.00 m	00:00:50		
5.50 m	5.50 m	00:00:55		
6.00 m	6.00 m	00:01:00		
6.50 m	6.50 m	00:01:05		
7.00 m	7.00 m	00:01:10		
7.50 m	7.50 m	00:01:15		
8.00 m	8.00 m	00:01:20		
8.50 m	8.50 m	00:01:25		
9.00 m	9.00 m	00:01:30		
9.50 m	9.50 m	00:01:35		
10.00 m	10.00 m	00:01:40		
10.50 m	10.50 m	00:01:45		
11.00 m	11.00 m	00:01:50		
11.50 m	11.50 m	00:01:55		
12.00 m	12.00 m	00:02:00		
12.50 m	12.50 m	00:02:05		
13.00 m	13.00 m	00:02:10		
13.50 m	13.50 m	00:02:15		
14.00 m	14.00 m	00:02:20		
14.50 m	14.50 m	00:02:25		
15.00 m	15.00 m	00:02:30		
15.50 m	15.50 m	00:02:35		
16.00 m	16.00 m	00:02:40		
16.50 m	16.50 m	00:02:45		
17.00 m	17.00 m	00:02:50		
17.50 m	17.50 m	00:02:55		
18.00 m	18.00 m	00:03:00		



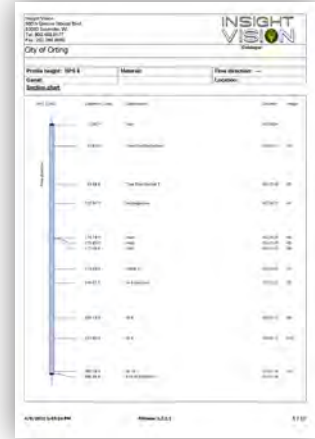
- Customizable Logo
- Timestamps to video
- Correlating pictures
- Job descriptions
- Damage descriptions
- Easily exported to a USB device

RIEZLER CRAWLER CAMERA SOFTWARE MODULES

RI-VISION MODULES

RiVision Report

- Allows for the creation of country-specific damage catalog reports, directly at the control unit.
- Free updates, when damage catalogs change or are upgraded.
- Compatible with WinCan vX



RiVision RS232

- Allows for the use of external systems, especially useful when recording inspections with third-party software (ex. WinCan vX) instead of RiVision.



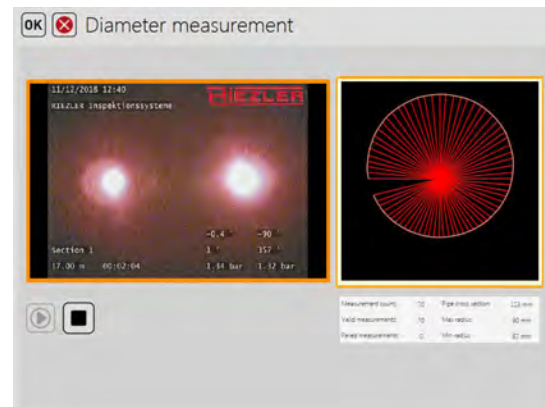
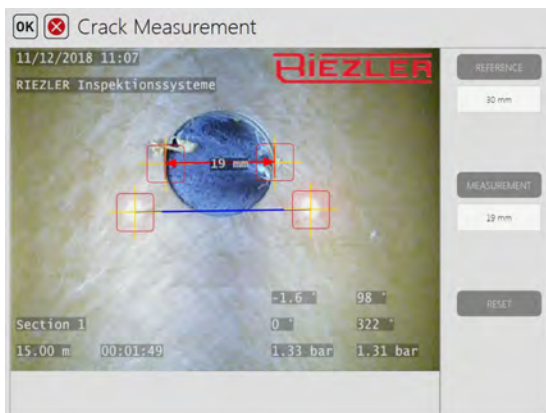
RiVision Inclination

- Allows for the creation of inclination graphics automatically at the control unit.



RiVision Measurement

- Allows for precise measurement of cracks and deformations within the pipe, using the full potential of the pan and tilt cameras with integrated parallel lasers.
- Autonomously determine the diameter of the pipe with a touch of a button.



RIEZLER CRAWLER CAMERA REEL OPTIONS



KTA-200 MOTORIZED REEL

- Automatic cable position
- Integrated control unit
- 492 - 656 feet of kevlar-reinforced, acid and abrasion resistant camera cable
- Manual or crawler synchronized feed mode
- Adjustable tractive force
- Meter counter with incremental position encoder and output shaft
- Customizable with multiple crawlers and camera heads to choose from

KTA-200 REEL SPECIFICATIONS

Dimensions	34.7" L x 13.8" W x 18.9" H
Weight	110 lbs. with 200m Cable

KTA-300 MOTORIZED REEL

- Automatic cable position
- Integrated control unit
- 656 - 1000 feet of kevlar-reinforced, acid and abrasion resistant camera cable
- Manual or crawler synchronized feed mode
- Adjustable tractive force
- Meter counter with incremental position encoder and output shaft
- Customizable with multiple crawlers and camera heads to choose from

KTA-300 REEL SPECIFICATIONS

Dimensions	37" L x 15.7" W x 22.4" H
Weight	170 lbs. with 300m Cable



KTM-7x(200) MANUAL REEL



- Stable stainless steel frame
- 656 feet of kevlar-reinforced cable
- Integrated digital meter counter
- Fully customizable with multiple crawlers and camera heads to choose from
- Adjustable break

200m REEL SPECIFICATIONS

Dimensions	17.7" L x 14.6" W x 21.3" H
Weight	57 lbs. with 200m Cable

KTM-7x(125) MANUAL REEL

- Stable stainless steel frame
- 410 feet of kevlar-reinforced cable
- Integrated digital meter counter
- Fully customizable with multiple crawlers and camera heads to choose from
- Adjustable break

125m REEL SPECIFICATIONS

Dimensions	17.7" L x 13.8" W x 21.3" H
Weight	43 lbs. with 125m Cable



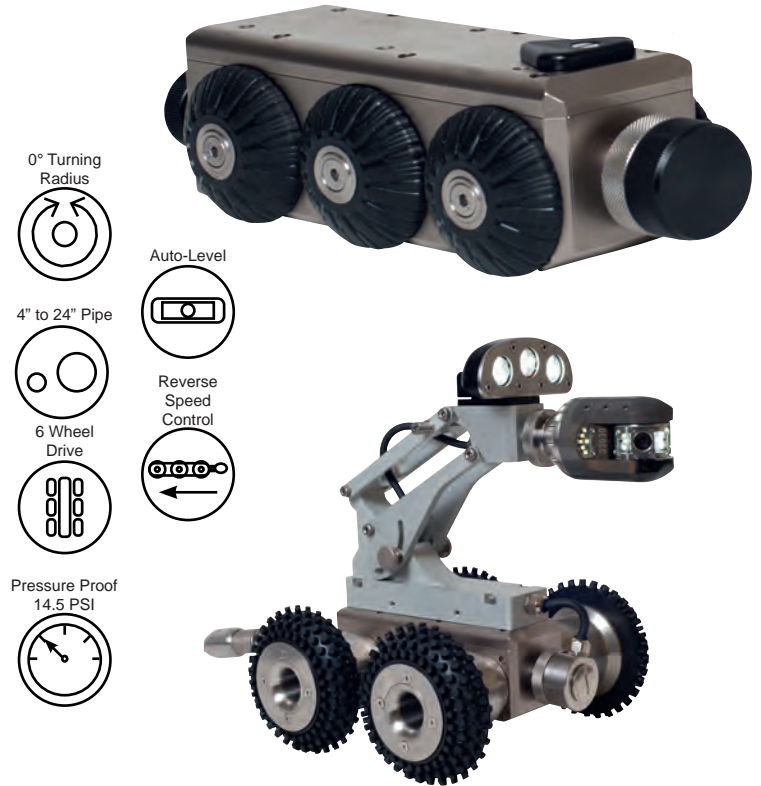
RIEZLER CRAWLER CAMERA

CRAWLER OPTIONS

FWL-100 CRAWLER

- Suitable for use in 4 to 24 inch pipe (with appropriate accessories)
- Speed control in reverse
- Steerable, with 6 powered wheels
- Mechanical camera elevator (optional)
- Pressure-proof till 14.5 PSI
- Internal pressure view
- Tilt measurements long. and lat. axis
- Power supply via control unit
- Fully customizable with multiple camera options

FWL-100 CRAWLER SPECIFICATIONS	
Dimensions	9.5" L x 3.4" W x 3.1" H
Weight	14.55 lbs.
Engine	2 BLDC-engine at 30 Watt
Materials	Brass / Stainless Steel



FWL-150 CRAWLER





- Suitable for use in 6 to 80 inch pipe (with appropriate accessories)
- Speed control in reverse
- Steerable, with 8 powered wheels
- Electrical powered camera elevator (stock)
- Pressure-proof till 14.5 PSI
- Internal pressure view
- Tilt measurements long. and lat. axis
- Power supply via control unit
- Fully customizable with multiple camera options

FWL-150 CRAWLER SPECIFICATIONS	
Dimensions	21.3" L x 5.1" W x 4.7" H
Weight	40.8 lbs.
Engine	2 BLDC-engine at 50 watt
Materials	Aluminum / Stainless Steel



RIEZLER CRAWLER CAMERA

CAMERA OPTIONS

	RIK-45	RSK-78	RSK-60	RZK-115
				
Self Leveling	X	X	X	X
Auto Pan 90°		X	X	X
Auto 360 Inspection		X	X	X
Pressure Supervision and Alarm		X	X	X
Swivel Range		+/- 110°	+/- 115°	+/- 125°
Parallel Laser			X	X
Pipe Size	3" - 16"	4" - 48"	3" - 24"	6" - 80"
Waterproof	72.5 PSI or 130' Depth	72.5 PSI or 130' Depth	72.5 PSI or 130' Depth	72.5 PSI or 130' Depth
LED Lights	12	18 Dimmable	18 Dimmable	30 Dimmable
Lens Angle	85°	85°	68°	4° - 68°
Focus	Fixed	Adjustable	Adjustable	Adjustable and Auto Focus
Zoom	3x Digital From MSE-500	3x Digital From MSE-500	3x Digital From MSE-500	10x Optical 32x Digital
Image Sensor	1/2.8" Color-CMOS	1/2.8" Farb-CMOS	1/4" Color-CMOS	1/3" Color-CMOS
Resolution	700 lines	700 lines	420 lines	700 lines
Dimensions	1.77" Diameter 2.75" Long	3.1" Diameter 4.3" Long	2.36" Diameter 3.94" Long	4.5" Diameter 6.3" Long
Weight	1 Lb	2.1 Lbs	1.5 Lbs	4.8 Lbs

*All values based on ideal pipe conditions



RIEZLER CRAWLER CAMERA ACCESSORIES

FWL-100 Accessories



Lowering Fork

Used to lower the small crawler into the pipe



Lift Hook With Holder

33 feet of rope with lift hook and holder



Camera Elevator

Usable in 12"+ pipe
Mechanical



Wheel

D84
Usable in 6"+ pipe



Wheel

D96
Usable in 6"+ pipe
Metal-grit traction



Wheel

D97
Usable in 8"+ pipe



Wheel

D100
Usable from 8"+ pipe
Metal-grit traction



Wheel

D117
Usable in 12"+ pipe



Wheel

D122
Usable in 12"+ pipe
Recommended for ducts or flat areas



Wheel Transport Case

Stores the spare wheel sets when not in use.

FWL-150 Accessories



D15 Wheel Transmission

Used in 20"+ pipe



Wheel

D160
Usable in 12"+ pipe



Wheel

D215
Spare wheel for the D15 Wheel Transmission



Elevator Extension

Allows the crawler to inspect pipes 40" - 80"+



Lift Hook

33 feet of rope with lift hook

Accessories for Both



Rear Camera

RFK-100
Usable from 4"+ pipe



Cable Guide

33 feet of rope with stainless steel cable guide



Locating Sender

512khz
Used to be able to locate the crawler underground



Additional Light

ZBL-500
Usable from 12"+ pipe
9 ultrabright LEDs



Stainless Steel Holder

Stainless steel holder for the MSE-500 control unit

RIEZLER CRAWLER CAMERA SERVICE



Insight Vision focuses on providing quick and efficient service for our customers. Most of the service work is done right at our home facility in Saukville, WI. Our expert service technicians are trained to diagnose and repair our full line of camera systems. Unlike some of our competitors, our typical repairs do not take weeks or months to complete.

What to Expect



- One on one customer service
- Expert service technicians
- Quick repair turnaround times (typical repair completed in less than 48 hours)
- Over the phone trouble shooting
- Speak directly to a person, no robotic call ques
- Smooth service experience

